

New results from SENSEI

Sho Uemura

Tel Aviv University
for the SENSEI Collaboration

SU was supported in part by the Zuckerman STEM Leadership Program

New results from SENSEI

- SENSEI has delivered world-leading results in low-threshold DM direct detection
 - ▶ 2017: Demonstration of $0.068 e^-$ noise in SENSEI prototype
 - ▶ 2018: DM search with surface run of SENSEI prototype
 - ▶ 2019: DM search with underground run of SENSEI prototype
- Today we present ***preliminary*** results from the SENSEI run concluded last week
 - ▶ First DM search with a science-grade SENSEI CCD
 - ▶ Paper to follow in the next few weeks



The SENSEI Collaboration



Fermilab:

- F. Chierchie, M. Cababie, G. Canelo, M. Crisler, A. Drlica-Wagner, J. Estrada, G. Fernandez-Moroni, D. Rodrigues, M. Sofo-Haro, L. Stefanazzi, J. Tiffenberg

Stony Brook:

- L. Chaplinsky, Dawa, R. Essig, D. Gift, S. Munagavalasa, A. Singal

Tel-Aviv:

- L. Barak, I. Bloch, E. Etzion, A. Orly, S. Uemura, T. Volansky

U. Oregon:

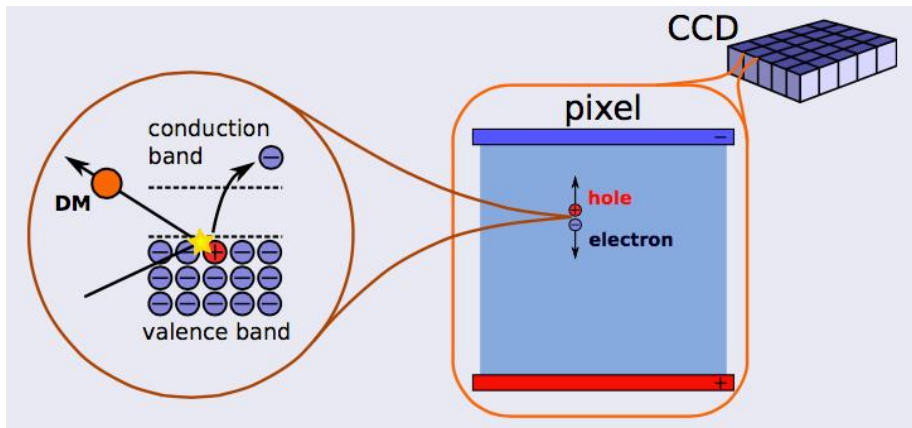
- T.-T. Yu

Fully funded by Heising-Simons Foundation
& leveraging R&D support from Fermilab



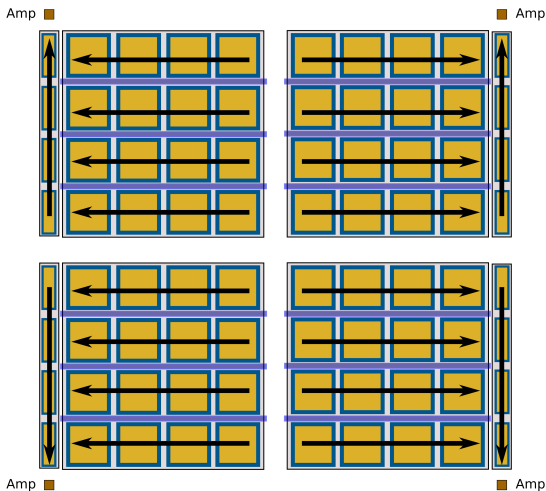
Electron recoils for sub-GeV dark matter

- We look for DM interactions with the electrons in a CCD
 - ▶ Benchmark models: DM-electron scattering, absorption
- Silicon bandgap gives us sensitivity to 1.2 eV excitations — if we can capture and resolve a single electron



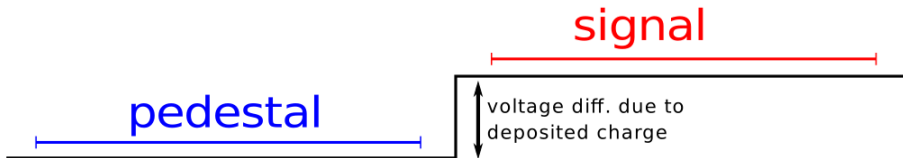
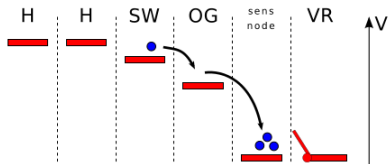
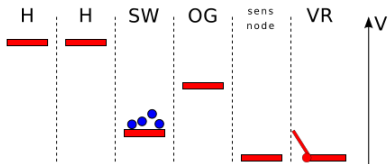
CCDs

- CCDs can read millions of charge packets with minimal loss
 - ▶ The result of decades of R&D in imaging CCDs
- Conventional CCDs are limited to noise of $\sim 2e^-$



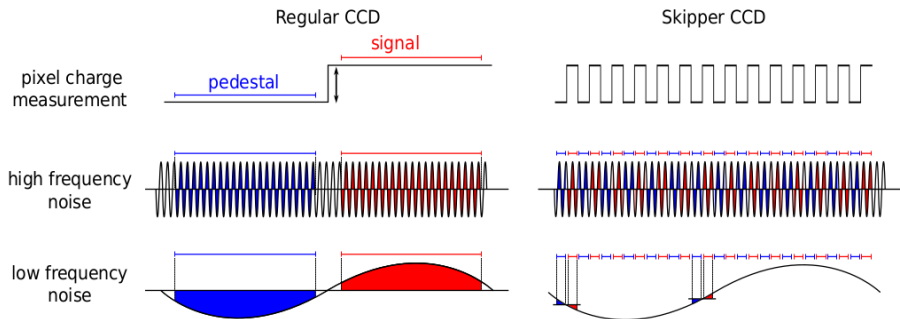
Skipper readout

- In a conventional CCD, charge moved to the sense node must be drained
 - ▶ You can integrate longer, but you cannot beat the $1/f$ noise
- The Skipper amplifier lets you make multiple measurements!



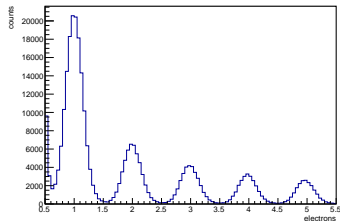
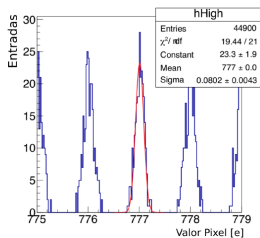
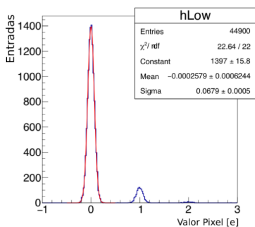
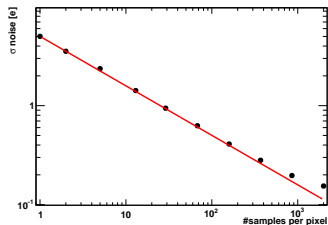
Skipper readout

- In a conventional CCD, charge moved to the sense node must be drained
 - ▶ You can integrate longer, but you cannot beat the $1/f$ noise
- The Skipper amplifier lets you make multiple measurements!



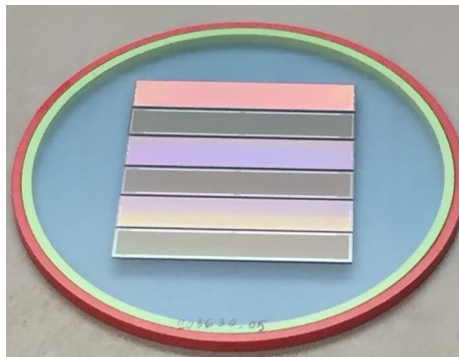
Sub-electron readout noise

- Skipper noise scales as $1/\sqrt{N}$
 - ▶ For the dark matter search we operate at $N = 300$, noise of $\sim 0.14e^-$
- We can count single electrons: self-calibrating charge measurement with zero noise
 - ▶ Other applications, such as a very clean measurement of the Fano factor in silicon



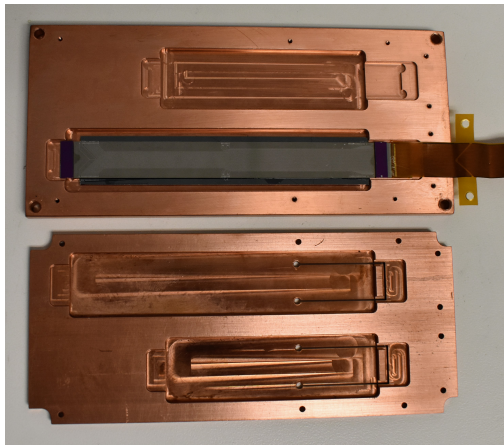
Our CCDs

- 6144×886 pixels (divided in quadrants), $15 \mu\text{m}$ pitch
- High-resistivity silicon $675 \mu\text{m}$ thick, $1.59 \times 9.42 \text{ cm}^2$
- Designed by LBNL MSL, fabricated by DALSA
- The first dedicated production of Skipper CCDs for dark matter
 - ▶ 1.925 grams of active mass, up from 0.0947 in protoSENSEI
 - ▶ Orders of magnitude improvement in dark current and amplifier luminescence



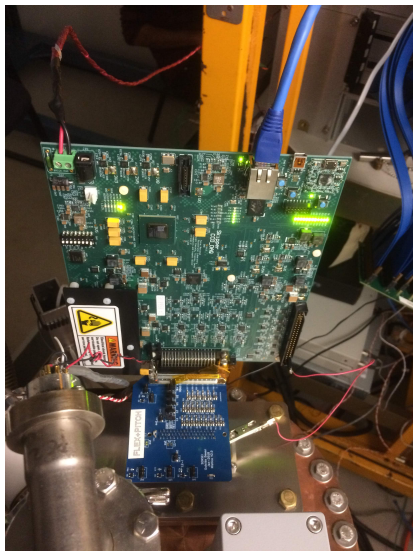
CCD package

- Densely packable and minimizes radioactive contamination
- Silicon pitch adapter serves multiple functions:
 - ▶ Electrical interface to flex cable
 - ▶ Mechanical support, with perfectly matched thermal expansion
 - ▶ Thermal connection to copper tray through machined leaf spring



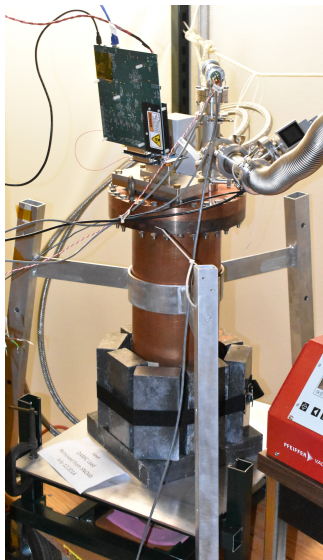
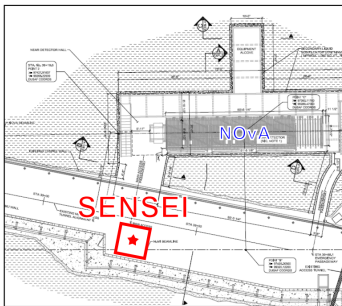
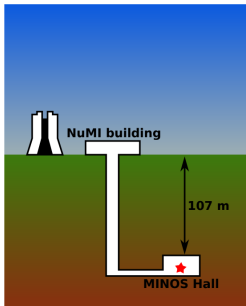
LTA readout board

- “Low Threshold Acquisition” — single-board readout system for Skipper CCDs
- Compared to previous solutions: compact, flexible, scalable, reliable
- One LTA board reads one CCD; multiple LTAs can be run synchronously for multi-CCD systems



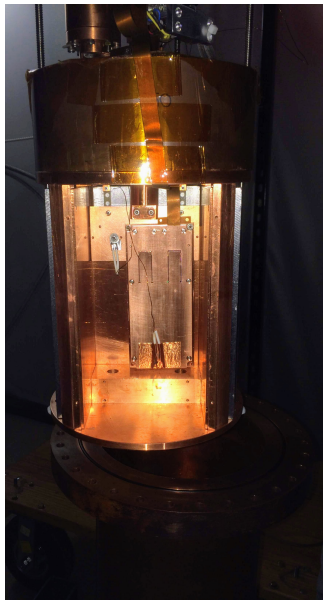
MINOS setup

- Shallow underground site reduces muon rate from cosmic rays; lead shielding reduces gamma rate from ambient radioactivity
- Cryocooler and insulating vacuum keep the CCD cold to minimize dark current



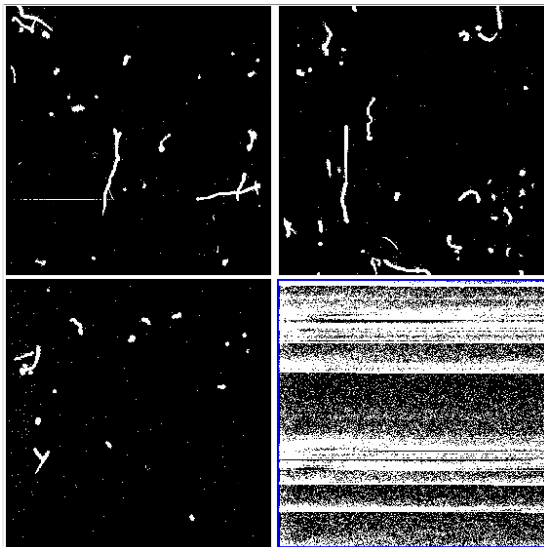
Inside the cryostat

- Shielding design adapted from DAMIC: cylindrical vacuum vessel with lead “plugs” above and below the CCD
- CCD at 135 K, biased at 70 V



The dataset

- 20 hours exposure, 6 hours readout
- Analysis developed using 7 commissioning images
- Blinded dataset of 22 images, Feb. 25 — Mar. 20
- One quadrant is damaged, one has a light leak: we use the first two quadrants for the results presented here, total exposure 19.926 gram-days



Images!

- This is 1/5th of one quadrant
- Muons: straight tracks
- Electrons: curly tracks
- X-rays: round clusters

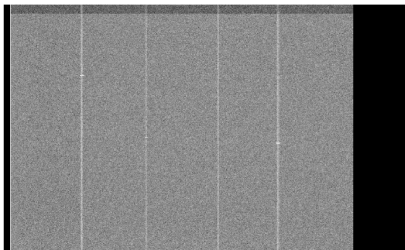


Searches and backgrounds

- Single-pixel searches (we exclude any pixel with a nonempty neighbor):
 - ▶ Single-electron: background-dominated
 - ▶ Two-electron: low-background
- Three-, four-electron clusters: zero-background (work in progress)
- Local sources of charge: high-energy clusters (ionizing radiation), CCD defects
- Spatially uniform sources of charge
 - ▶ Spurious charge: charge generated during readout
 - ▶ Dark current: charge generated during exposure by thermal excitation
 - ▶ Others?

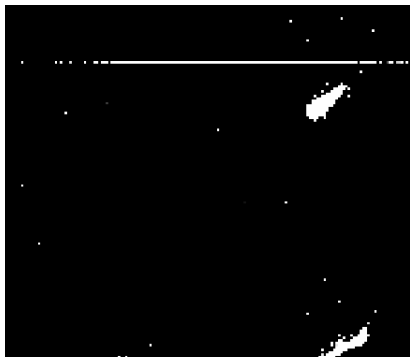
Cuts: bad pixels/dark spikes

- Surface defects on the CCD can create pixels with high dark current
- We identify these with special high-temperature runs and by stacking images, and mask them out



Cuts: serial register hits

- Tracks that cross the serial register during readout can produce lines of charge in the image
- We mask out isolated horizontal lines of charge



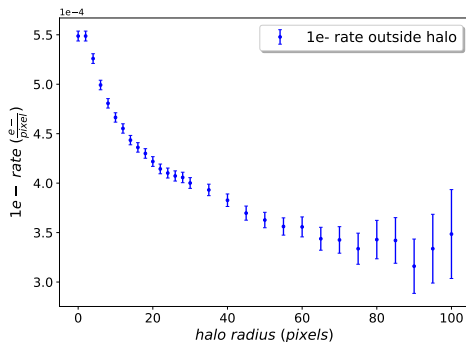
Cuts: bleeding

- Some charge may be left behind when we transfer charge from one cell to the next
 - ▶ Surface defects can create traps that increase the bleeding tails in specific columns
- We mask out bleed regions above and to the right of high-charge pixels
- We identify high-bleed columns by looking for excess charge above high-charge pixels



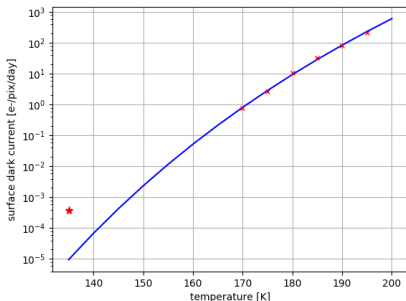
Cuts: halo

- We see an excess of charge near high-charge pixels, even after masking out bleed regions
 - ▶ We suspect these are low-energy photons
- We apply a tight cut (>60 pixels from any high-charge pixel) for the $1e^-$ analysis



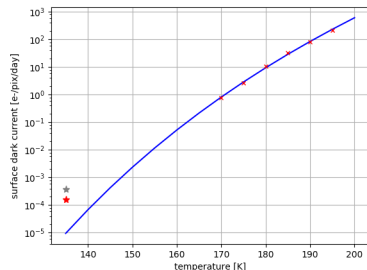
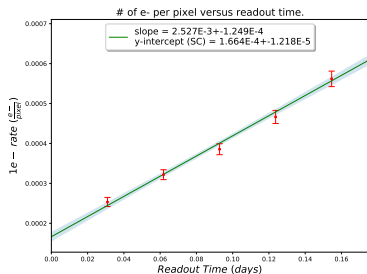
$1e^-$ rate

- We see $3.188(90) \times 10^{-4} e^-/\text{pixel}$ in our images, from a total exposure of 1.380 gram-days
 - ▶ If all exposure-dependent, this is a $1e^-$ rate of $3.363(94) \times 10^{-4} e^-/\text{pixel/day}$
- Is this all dark current? Unlikely!
 - ▶ Extrapolation from higher temperatures predicts $\sim 1 \times 10^{-5} e^-/\text{pixel/day}$ at our operating temperature of 135 K



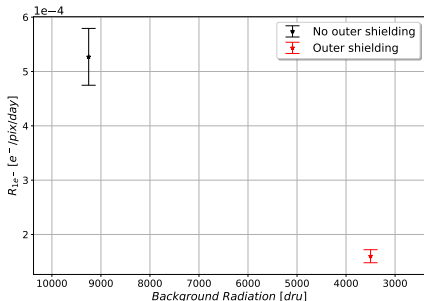
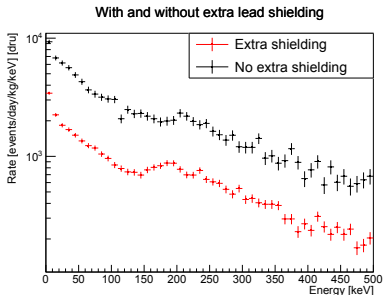
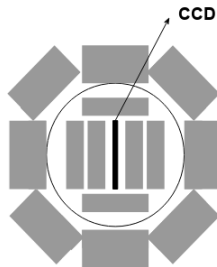
Spurious charge measurement

- Measurements with shorter exposures show a limiting value for the CCD charge:
 $1.66(12) \times 10^{-4} e^-/\text{pixel}$
 - ▶ Half of the $1e^-$ rate we see is due to spurious charge!
 - ▶ Optimization of the CCD voltage waveforms will reduce this background in future runs
- Subtracting the exposure-independent charge, our $1e^-$ rate is $1.59(16) \times 10^{-4} e^-/\text{pixel}/\text{day}$



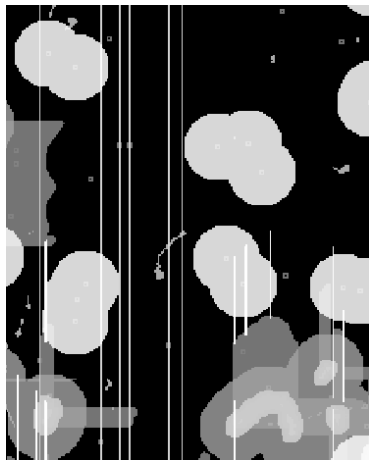
1e⁻ rate vs. shielding

- We have data with and without the outer ring of lead bricks
- Factor of 3 reduction in the rate of high-energy tracks → factor of 3 reduction in the 1e⁻ rate
 - ▶ There is some mechanism by which ionizing radiation generates charge uniformly in our CCD
 - ▶ Better shielding will very likely further reduce our 1e⁻ rate



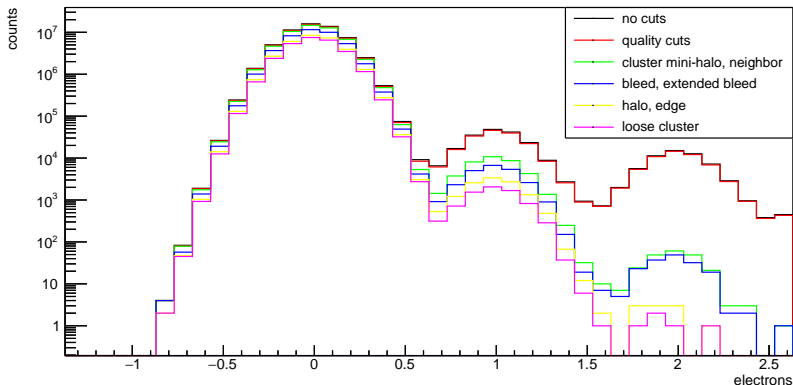
Cuts: loose clusters

- For the $2e^-$ search, we use a smaller halo cut (to preserve exposure) but apply an additional cut to remove regions with higher charge density
- If two $1e^-$ pixels are within 20 pixels of each other, we remove a radius-20 circle around both
- This cut kills half of the $2e^-$ events with a 11% loss of exposure



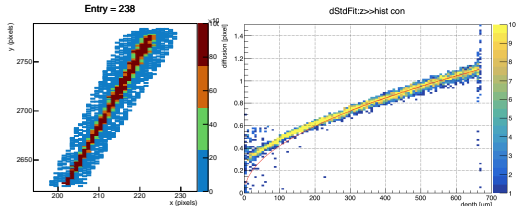
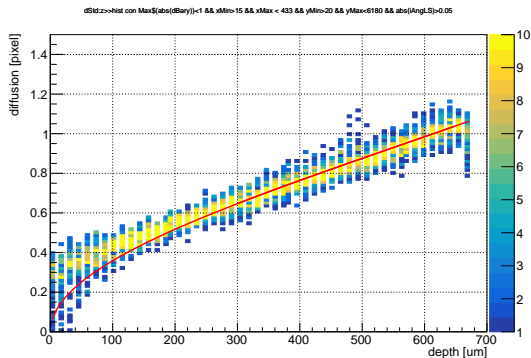
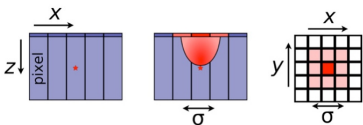
$2e^-$ rate

- After all cuts, we see 5 pixels with $2e^-$, from an exposure of 9.145 gram-days



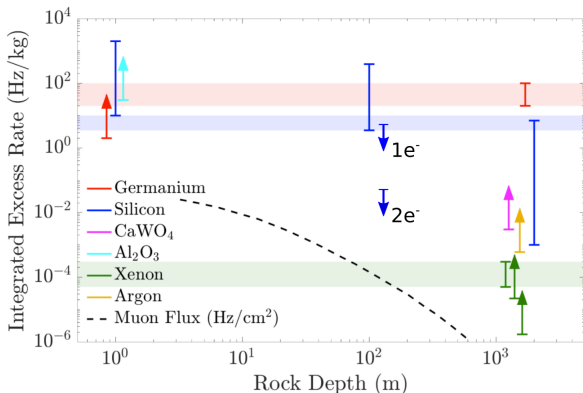
Charge diffusion

- What is the probability for both electrons from a DM interaction to end up in the same pixel?
- We use muon tracks to measure diffusion as a function of depth
- 20.9% for $2e^-$ to stay in one pixel
- 72.7%, 74.4% for 3, $4e^-$ to form a contiguous cluster



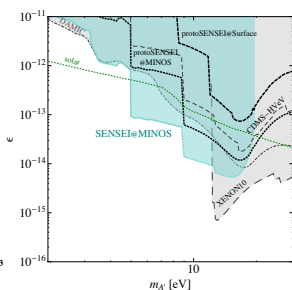
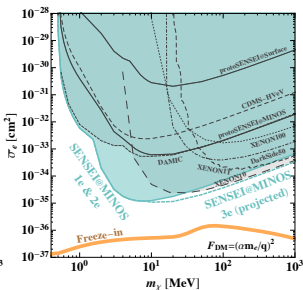
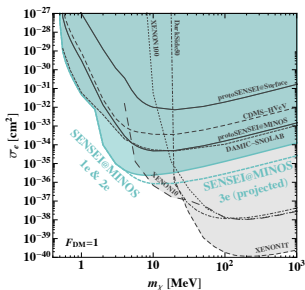
Limits on event rates

- 90% upper limits: 6.1 Hz/kg for $1e^-$, 5.6×10^{-2} Hz/kg for $2e^-$
- We set new records for $1e^-$ and $2e^-$ rates in semiconductors
 - ▶ cf. arXiv:2002.06937 from last Wine+Cheese



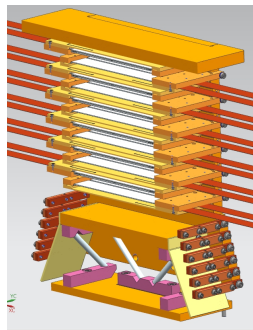
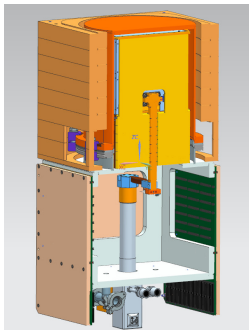
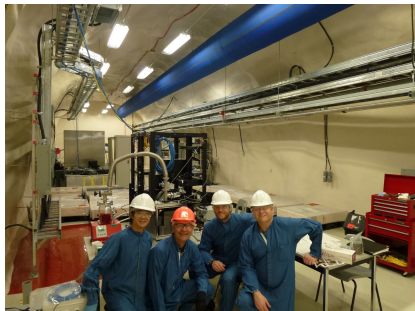
Limits on dark matter

- These are actual limits for $1e^-$ and $2e^-$ searches, and projected limits for $3 - 4e^-$ assuming we see zero events
 - ▶ Left to right: $F_{DM} = 1$ scattering (heavy mediator), $F_{DM} = (\alpha m_e/q)^2$ scattering (light mediator), absorption
- Paper forthcoming in the next few weeks



SENSEI@SNOLAB

- We are building the full-scale SENSEI experiment, deep underground at SNOLAB with a low-background shield
- “Phase 1” system is operating at SNOLAB



The future of Skippers

- SENSEI@MINOS demonstrates that Skipper CCDs have the performance we need to reach theory targets
 - ▶ SENSEI@SNOLAB: 100 grams
 - ▶ DAMIC-M: 1 kg
 - ▶ Oscura: 10 kg

