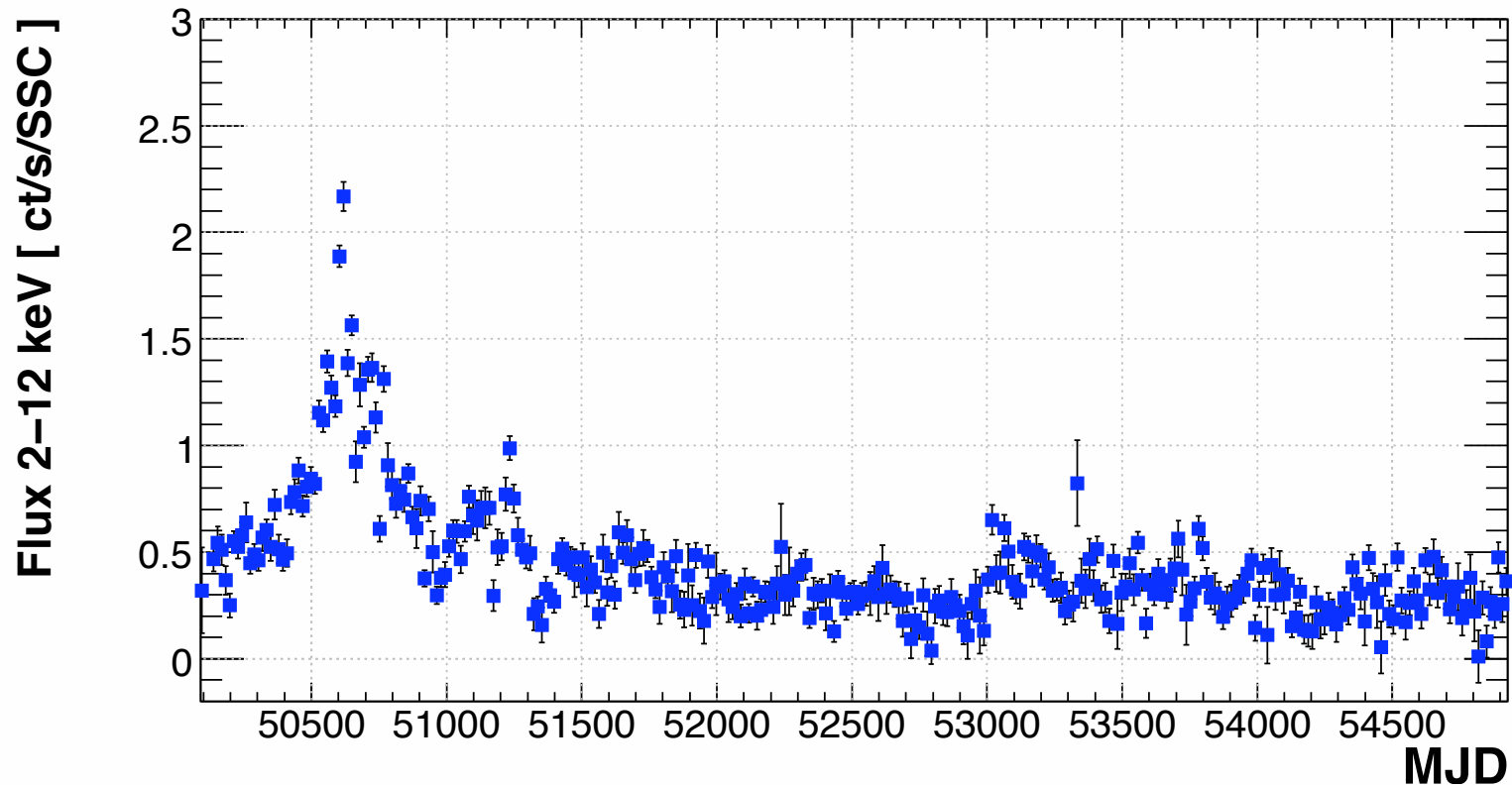


RXTE/ASM light curve from Jan 1996 till April 2009

Weighted averaged over various time scales

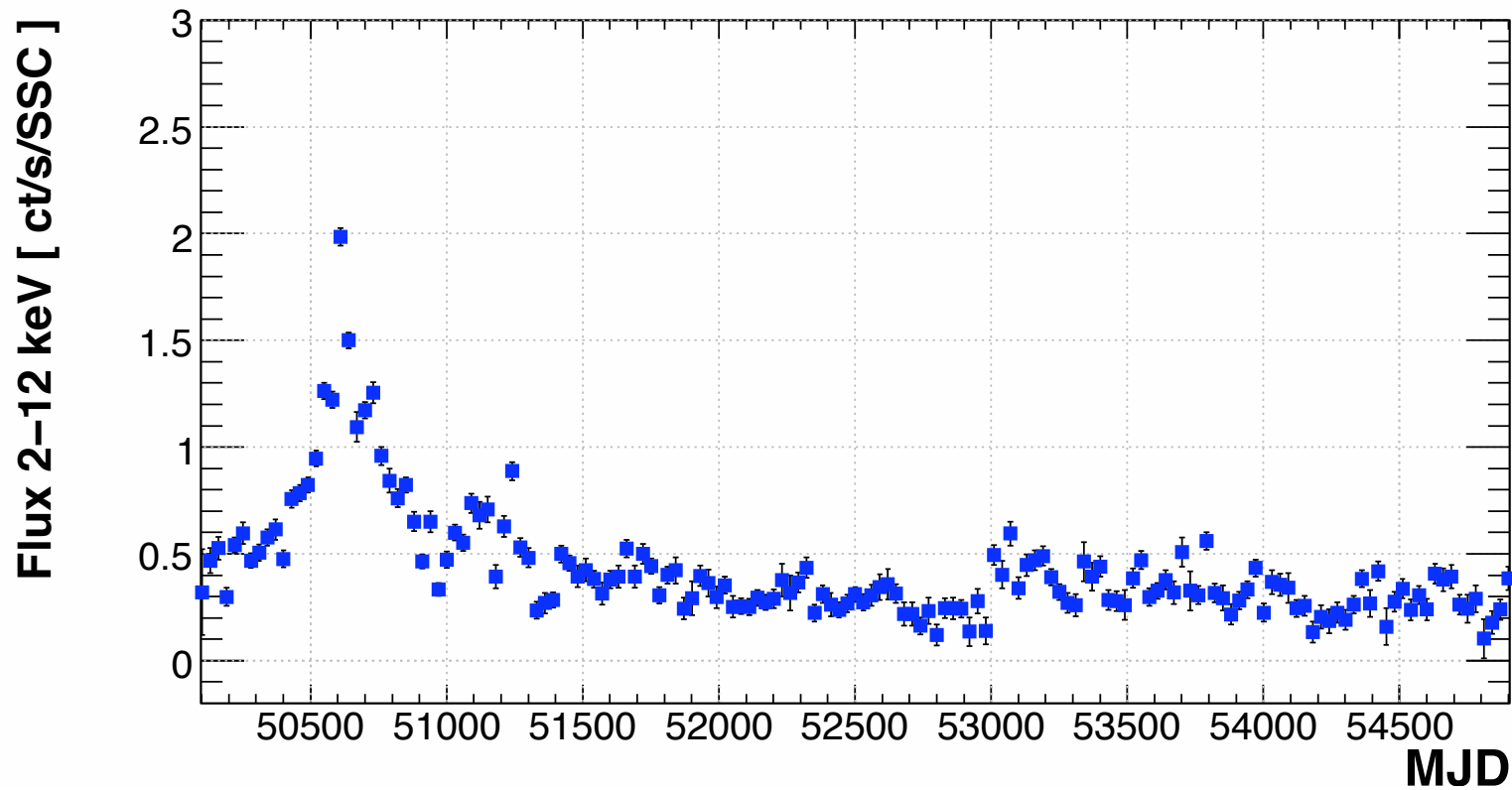
15 days time bin



RXTE/ASM light curve from Jan 1996 till April 2009

Weighted averaged over various time scales

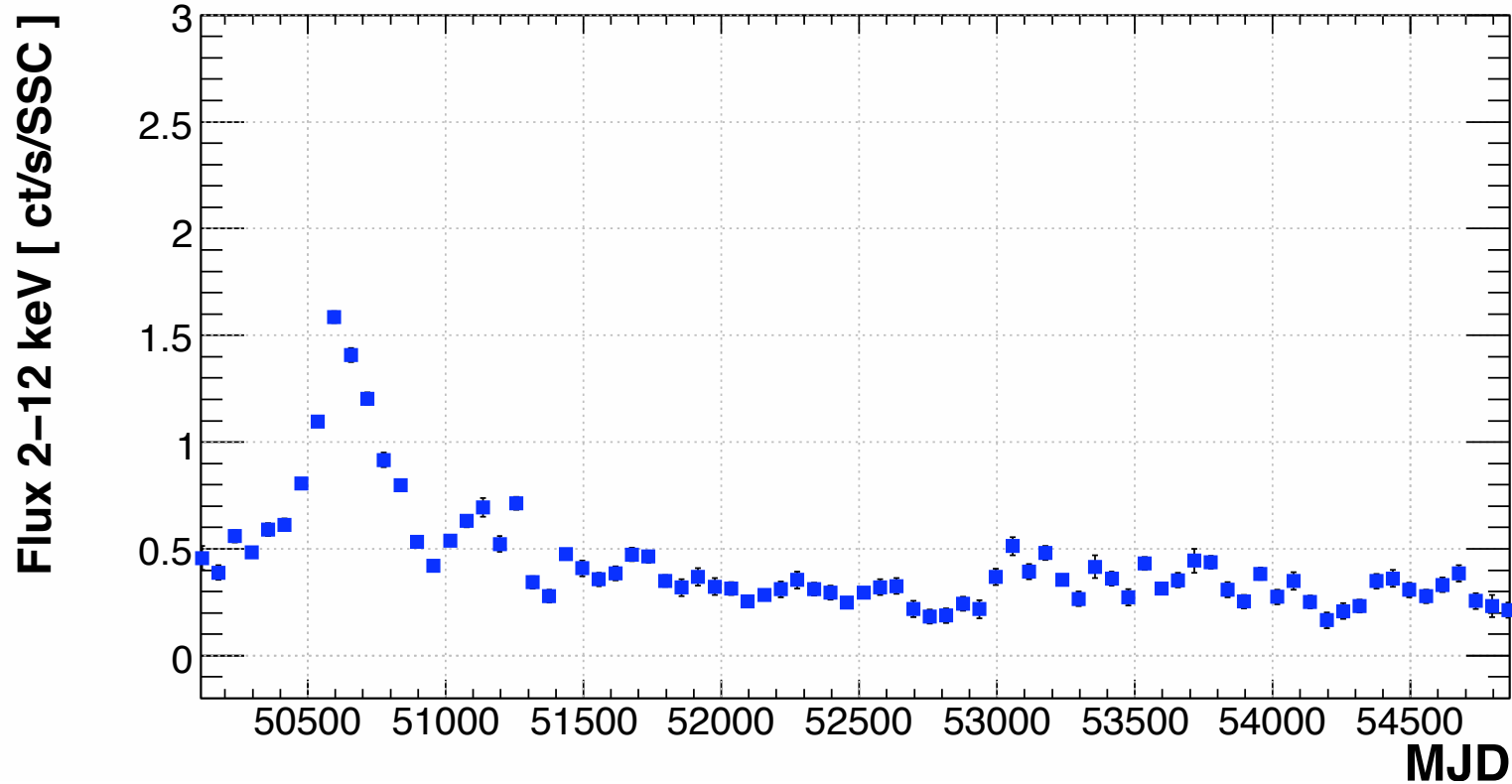
30 days time bin



RXTE/ASM light curve from Jan 1996 till April 2009

Weighted averaged over various time scales

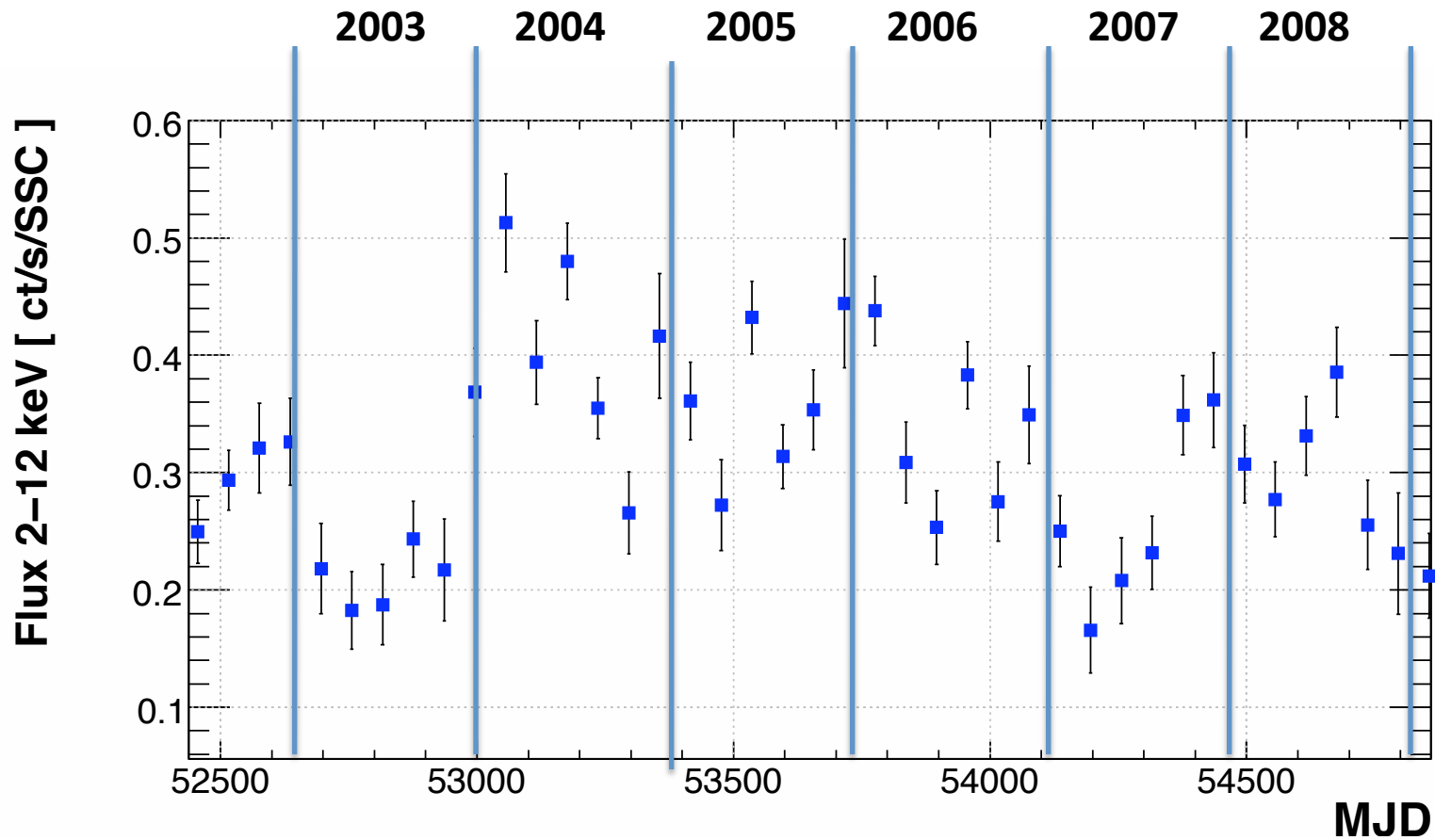
60 days time bin



RXTE/ASM light curve from Jan 1996 till April 2009

Weighted averaged over various time scales

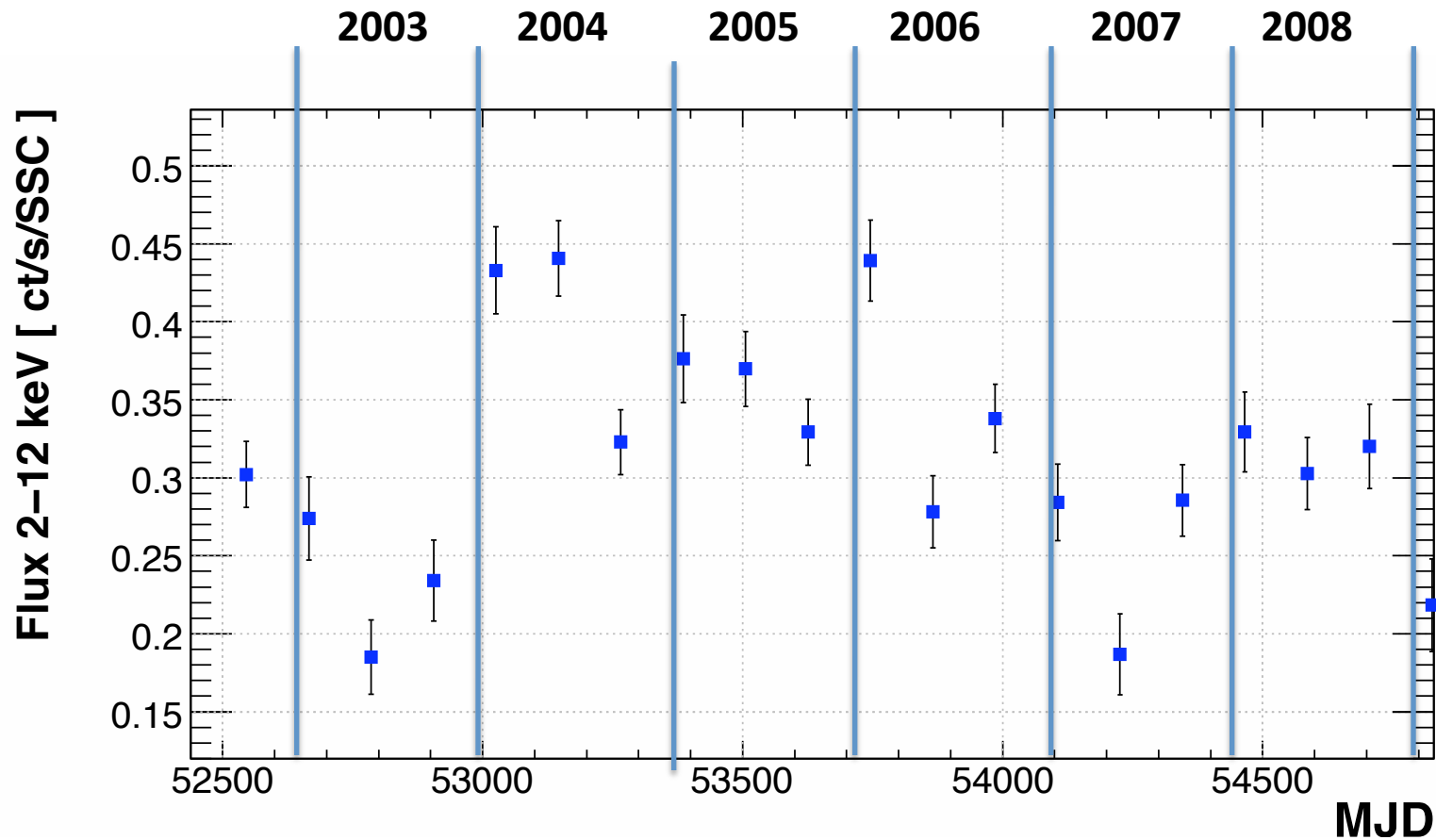
60 days time bin Zoom in range 2003-2009



RXTE/ASM light curve from Jan 1996 till April 2009

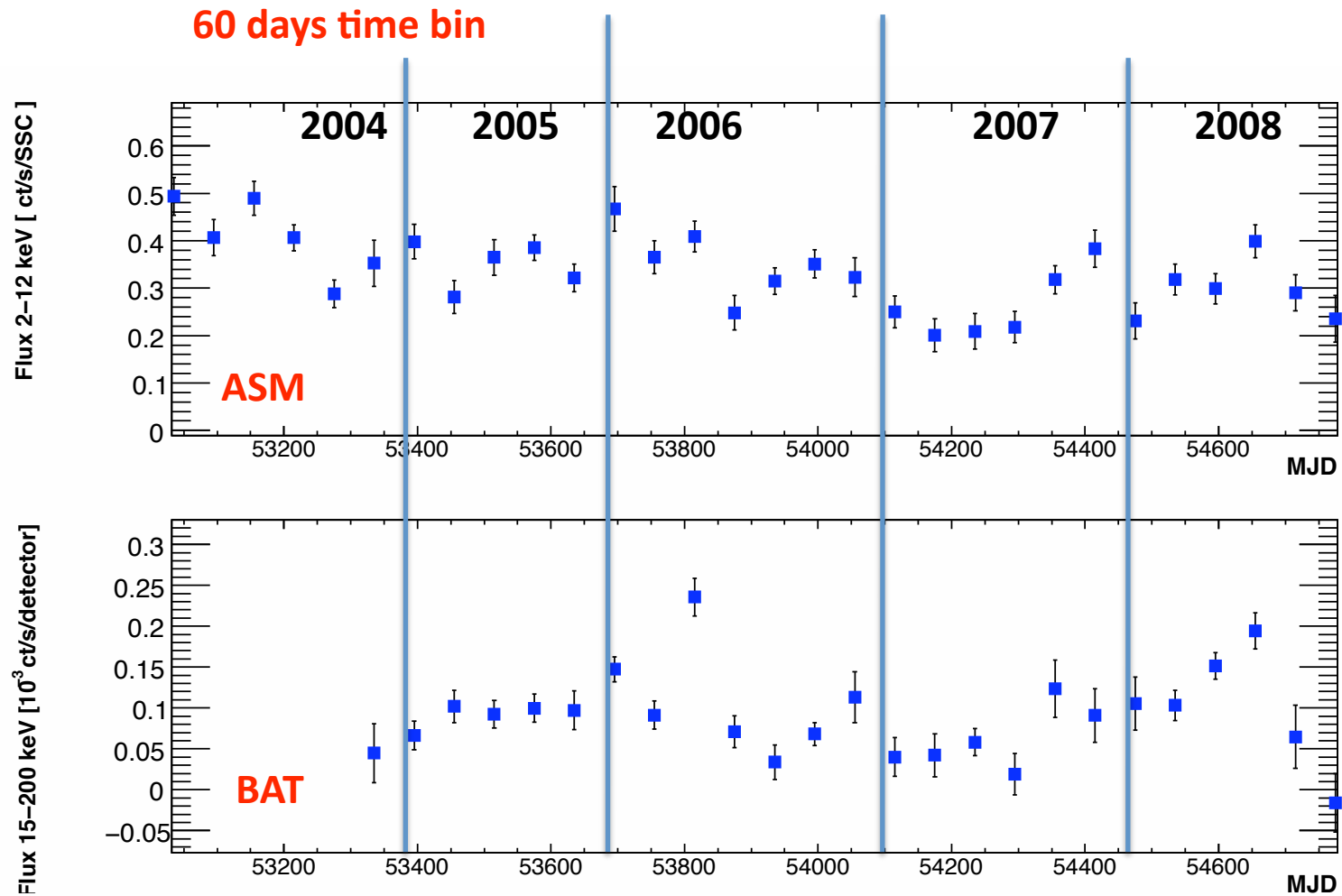
Weighted averaged over various time scales

120 days time bin Zoom in range 2003-2009



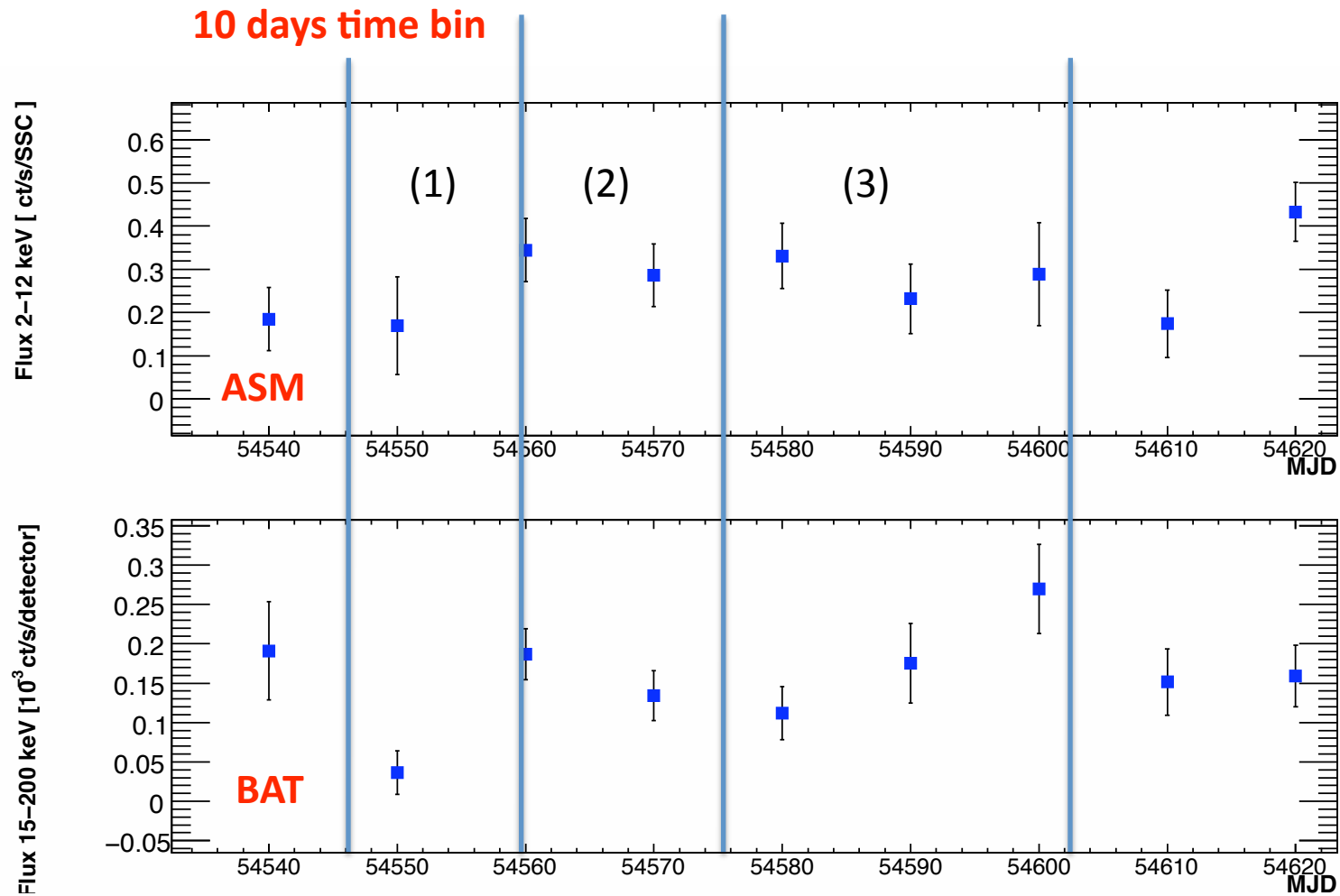
RXTE/ASM + Swift/BAT (Reduced by Marco Ajello)

Weighted averaged over various time scales



RXTE/ASM + Swift/BAT (Reduced by Marco Ajello)

Weighted averaged over various time scales



Conclusions

X-rays (ASM and BAT) show that Mrk501 was in a rather low state in comparison with other epochs

BAT data is also available. Spectra can be produced for the time period of the campaign, and also for the 2 last time intervals (2 and 3). Data in ascii file will be placed in the web in the next days. It will be useful for the modeling.